

Make the Best Choice for Your Endoscopic Procedure

Why should you choose an ASGE Member for your endoscopic procedure?

Having an ASGE member perform your endoscopic procedures ensures that you are in the hands of someone who is highly trained. Physicians and surgeons who are members of the American Society for Gastrointestinal Endoscopy (ASGE) have highly specialized training in endoscopic procedures of the digestive tract, including upper GI (gastrointestinal) endoscopy, flexible sigmoidoscopy, colonoscopy, endoscopic retrograde cholangiopancreatography (ERCP) and endoscopic ultrasound (EUS).

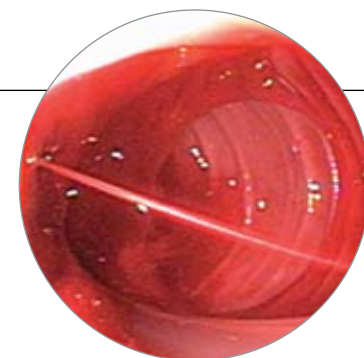
ASGE members undergo a rigorous application and screening process and are recognized by the medical community as knowledgeable, experienced

experts in gastroenterology and GI surgery who, in addition, have advanced training in gastrointestinal endoscopic procedures.

ASGE members have demonstrated proof of rigorous endoscopic training. The American Society for Gastrointestinal Endoscopy is the only medical society that requires documentation of specific training in GI endoscopic procedures.

How will your GI endoscopist work with your primary care physician?

ASGE physicians usually work on referral from your primary care physician. Your GI endoscopist will communicate with your primary care physician about the results of your endoscopic procedure. Together, they will deter-



Endoscopy can provide an accurate diagnosis of conditions such as a bleeding duodenal ulcer.

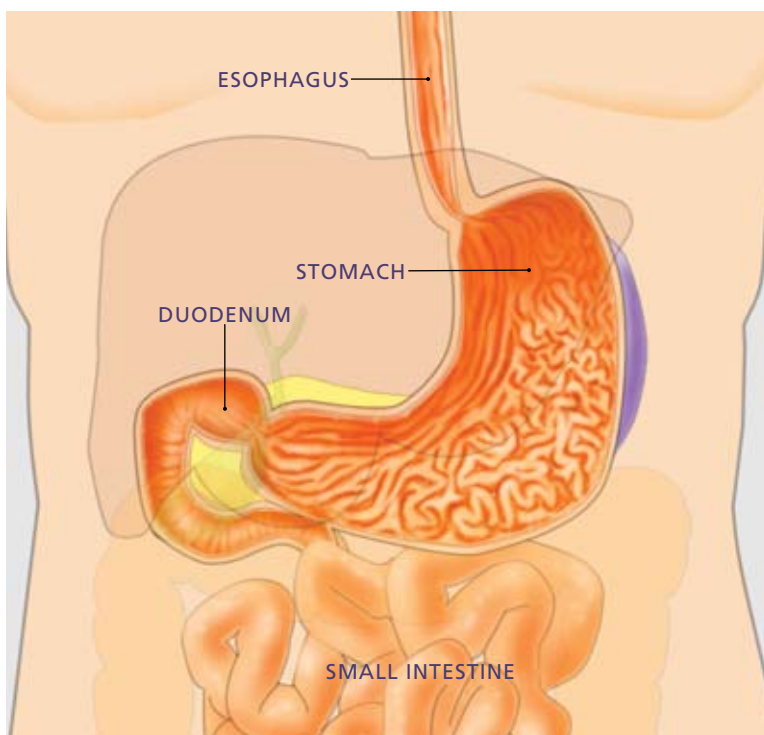
mine what is appropriate for treatment, follow-up visits and/or if future endoscopic exams are needed.

Is your physician an ASGE member? Ask.

Make the best choice. If you need an endoscopic procedure, ask your primary care doctor to recommend a specialist in gastrointestinal endoscopy who is also an ASGE member. ASGE members are distinctively qualified to perform the gastrointestinal endoscopic procedures that your primary care physician or other healthcare provider recommends and to work with you and your primary care provider on issues of digestive health.

Find an endoscopist in your area.

ASGE can help you find a GI endoscopist in your area. It's easy. Visit the ASGE Web site at www.asge.org and click on the Find a Doctor. By typing in your zip code, the Find a Doctor program will give you a list of the ASGE members in your area. Remember, you can always ask if your physician is an ASGE member.



1 In an upper endoscopy, the physician passes an endoscope through the mouth and into the esophagus, stomach and duodenum.

Make the Best Choice for Your Endoscopic Procedure— An ASGE Gastrointestinal Endoscopist

ASGE Active Physician Members have met the following rigorous requirements:

- Unlimited medical license;
- Graduation from an accredited medical school and completion of a residency program;
- Documented evidence of formal training in gastrointestinal endoscopy under the supervision of certified gastroenterologists or gastrointestinal surgeons – ASGE is the only society that requires evidence of such training;
- Finally, ASGE Active Members must provide evidence of professional competence through sponsorship by at least one member who has personal knowledge of the applicant's endoscopic training and skills.

Be certain your physician meets the high standards of ASGE membership.

An upper endoscope is a medical device used by expert physicians to look inside the digestive tract, which includes the esophagus, stomach and duodenum (first portion of the small intestine). A colonoscope allows the physician to examine the colon and rectum.

f.y.i.

Endoscopy Procedures At-A-Glance

There are a variety of endoscopic procedures used in the diagnosis and treatment of many problems and diseases of the digestive tract. They include:

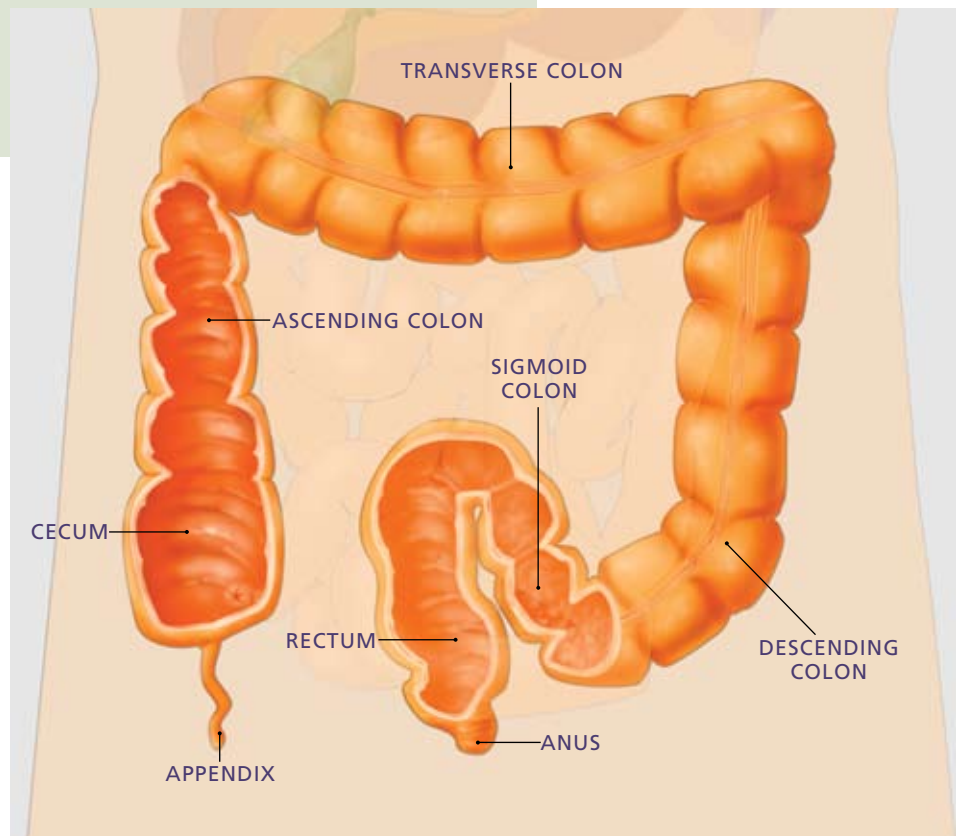
- Flexible Sigmoidoscopy
- Colonoscopy
- Upper Endoscopy
- Endoscopic Ultrasound
- ERCP
- and others



Need more information on endoscopy or colonoscopy?

ASGE offers additional materials on GI endoscopy and endoscopic procedures including brochures on Upper GI Endoscopy, Endoscopic Ultrasound, ERCP, Flexible Sigmoidoscopy and Colonoscopy on the ASGE Web site at www.asge.org as well as other useful information on digestive health and gastrointestinal problems.

▼
asge.org
screen4coloncancer.org



In a lower endoscopy, the physician passes the endoscope through the rectum and into the colon.

Notes or questions:

This information is intended only to provide general guidance. It does not provide definitive medical advice. It is important that you consult your doctor about your specific condition.

Since its founding in 1941, the American Society for Gastrointestinal Endoscopy (ASGE) has been dedicated to advancing patient care and digestive health by promoting excellence in gastrointestinal endoscopy. ASGE, with more than 11,000 members worldwide, promotes the highest standards for endoscopic training and practice, fosters endoscopic research, and is the foremost resource for endoscopic education. This information is the opinion of and provided by the American Society for Gastrointestinal Endoscopy.



Copyright © 2010. American Society for Gastrointestinal Endoscopy. All rights reserved. This information may not be reproduced without express written permission by ASGE. For permission requests, please contact the ASGE Communications Department at 630-673-0600.